



toxplanet

TUTORIAL

EXPERT Product Tabs

Print, Email, Save Results

ToxPlanet's EXPERT product tabs easily allow you to navigate search-specific content contained within its various products and their many component collections. In this tutorial, we will look at how to **Print, **Email**, and **Save** results from the EXPERT product tabs.**

EXPERTIndex™ Search

Search Term

- Starts With
 Exact Match
 Contains

Submit

Clear

Full Text Search

MSDSonline® Advanced

TOXLINE® Special
AdvancedREACH Registrations
Advanced

Welcome to the ToxPlanet System

Our products have been designed to provide fast, easy, and intuitive access to a collection containing millions of documents covering over 1,000,000 unique substances. This page is intended to give you a quick overview of how our system works.

The ToxPlanet products can be searched using seven different Search Modes. Select from the left search panel to switch between Search Modes.

EXPERTIndex™ Search

Full Text Search

MSDSonline® Advanced

TOXLINE® Special Advanced

REACH Registrations Advanced

TSCATS Complete™ Advanced

ListEXPERT - List View

To use ToxPlanet's product tabs, begin by conducting an EXPERTIndex search. Start by clicking the EXPERTIndex™ Search button on the left side of the screen. This brings up a search box and several searching options (Starts With, Exact Match, and Contains). The "Starts With" radio button is enabled as it is the default setting.

EXPERTIndex™ Search

Search Term

phenol

- Starts With
- Exact Match
- Contains

Submit

Clear

Full Text Search

MSDSonline® Advanced

TOXLINE® Special
AdvancedREACH Registrations
Advanced

Welcome to the ToxPlanet System

Our products have been designed to provide fast, easy, and intuitive access to a collection containing **millions** of documents covering over **1,000,000** unique substances. This page is intended to give you a quick overview of how our system works.

The ToxPlanet products can be searched using seven different **Search Modes**. Select from the left search panel to switch between **Search Modes**.

EXPERTIndex™ Search

Full Text Search

MSDSonline® Advanced

TOXLINE® Special Advanced

REACH Registrations Advanced

TSCATS *Complete*™ Advanced

ListEXPERT - List View

Enter the desired search term in the search box (for example, “*phenol*”), select a search option (for example, “**Exact Match**”), and click the **Submit** button to execute the search.

EXPERTIndex™ Search

Search Term

phenol

- Starts With
 Exact Match
 Contains

Submit

Clear

Full Text Search

MSDSonline® Advanced

TOXLINE® Special
AdvancedREACH Registrations
Advanced

Chemical Identity

ChemEXPERT™

ReproEXPERT™

ListEXPERT™

PoisonEXPERT™

REACH Registrations

C & L Inventory

DrugEXPERT™

TOXLINE® Special

ECIS

TSCATS Complete™

MSDSonline®

Similar Compounds

MyEXPERT™

Chemical Identity Search Results

Name of Substance

Phenol [USP;JAN]

CAS Registry Number

108-95-2

Molecular Formula

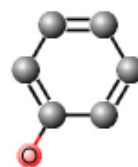
C6-H6-O

Other Registry Numbers

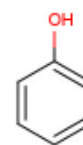
14534-23-7; 50356-25-7; 8002-07-1

SMILES

OC1=CC=CC=C1



Enlarge



Enlarge



NFPA 704



View



If there is an exact match in the EXPERTIndex, the system retrieves the Chemical Identity page for the substance. Product-specific results can be found under the respective product tabs at the top of the screen.

EXPERTIndex™ Search

Search Term

phenol

- Starts With
 Exact Match
 Contains

Submit

Clear

Full Text Search

MSDSonline® Advanced

TOXLINE® Special
AdvancedREACH Registrations
Advanced

Chemical Identity

ChemEXPERT™

ReproEXPERT™

ListEXPERT™

PoisonEXPERT™

REACH Registrations

C & L Inventory

DrugEXPERT™

TOXLINE® Special

ECIS

TSCATS Complete™

MSDSonline®






Similar Compounds

MyEXPERT™

ReproEXPERT™ Search Results

Total Documents Returned: 10

 Expand All Nodes  Collapse All Nodes

-  NTP - National Toxicology Program
-  REPROTOX®
-  Shepard's Catalog of Teratogenic Agents
-  TERIS - Teratogen Information System
-  Workplace Hazardous Materials Information System (WHMIS) Program on Safe Motherhood



Click on a product tab to display the collections and documents available in that product and for that search.

EXPERTIndex™ Search

Search Term

phenol

- Starts With
 Exact Match
 Contains

Submit

Clear

Full Text Search








MSDSonline® Advanced

TOXLINE® Special
AdvancedREACH Registrations
Advanced

Chemical Identity ChemEXPERT™ **ReproEXPERT™** ListEXPERT™ PoisonEXPERT™ REACH Registrations
C & L Inventory DrugEXPERT™ TOXLINE® Special ECIS TSCATS *Complete*™ MSDSonline® Similar Compounds
MyEXPERT™

ReproEXPERT™ Search Results

Total Documents Returned: 10

-  Expand All Nodes  Collapse All Nodes
-  NTP - National Toxicology Program
 -  REPROTOX®
 -  Shepard's Catalog of Teratogenic Agents
 -  TERIS - Teratogen Information System
 -  Workplace Hazardous Materials Information System (WHMIS) Program on Safe Motherhood



You can print results by clicking the orange PDF icon (to expand and print all results).

ReproEXPERT™ Search Results

Search Results for 108-95-2

Total Documents Displayed: 10 (Total Found: 10)

NTP - National Toxicology Program

Reproductive Assessment by Continuous Breeding (RACB) Studies and Abstracts

Final Report on the Reproductive Toxicity of a Chemical Mixture in CD-1-Swiss Mice

Final Report on the Reproductive Toxicity of a Complex Mixture of Groundwater Contaminants in Sprague-Dawley Rats

Teratology (TER) Studies and Abstracts

Abstract on the Teratologic Evaluation of Phenol (CAS No. 108-95-2) in CD-1® Mice

Abstract on the Teratologic Evaluation of Phenol (CAS No. 108-95-2) In CD® Rats

Teratologic Evaluation of Phenol (CAS No. 108-95-2) in CD Rats

REPROTOX®

PHENOL

SPORICIDIN DISINFECTANT

Shepard's Catalog of Teratogenic Agents

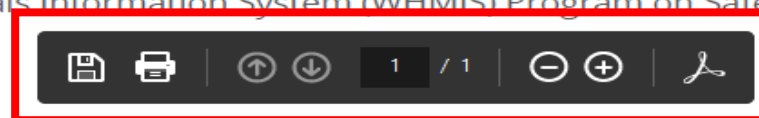
Phenol

TERIS - Teratogen Information System

PHENOL

Workplace Hazardous Materials Information System (WHMIS) Program on Safe Motherhood

Phenol



The system converts the results list to PDF format and displays it in a new window with native Adobe controls. These controls can be used to **Print** or **Save** the results list, or to attach a copy of the saved list to an **Email**.



toxplanet

For more information, visit our website

www.toxplanet.com